

An Overview of Dental Issues in South East Wales

David Thomas
Consultant in Dental Public Health
NPHS



National Public Health
Service for Wales

Gwasanaeth Iechyd Cyhoeddus
Cenedlaethol Cymru

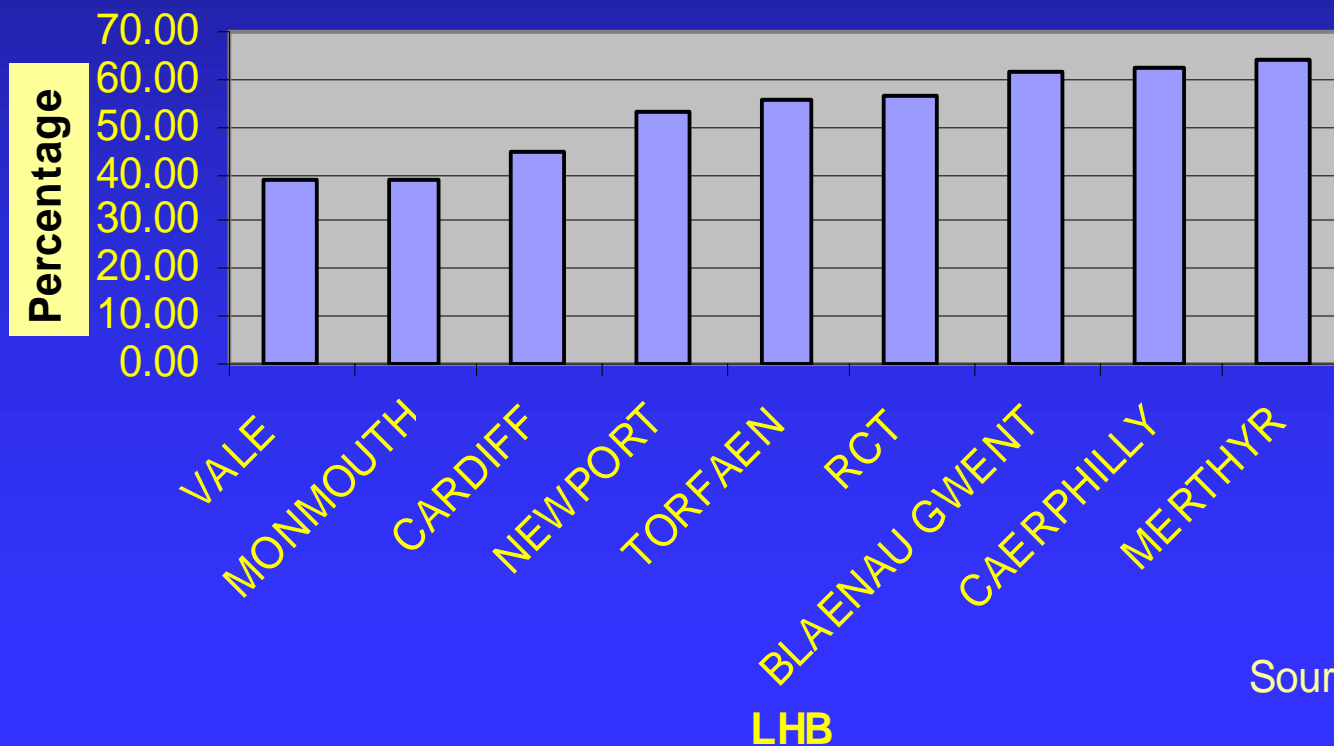
Current Local Issues

- Oral Health Inequalities
- Access
- Possible impacts of new contractual arrangements



Oral health inequalities still exist!

% Active Decay in 5-Year Olds by LHB 2003-2004



Source WOHU

Experience of General Anaesthesia in Children

Birmingham and Black Country SHA

683 cases in 2003/04

SE Wales Region

1494 cases in 2003/04



National Public Health
Service for Wales

Gwasanaeth Iechyd Cyhoeddus
Cenedlaethol Cymru

Access to NHS Dentistry

■ Where we were and are?



Where we were: old system

- Designed in 1948, post war Britain
- Poor oral hygiene
- High demand for extensive treatment
- Routine treatment more common now

Where we are

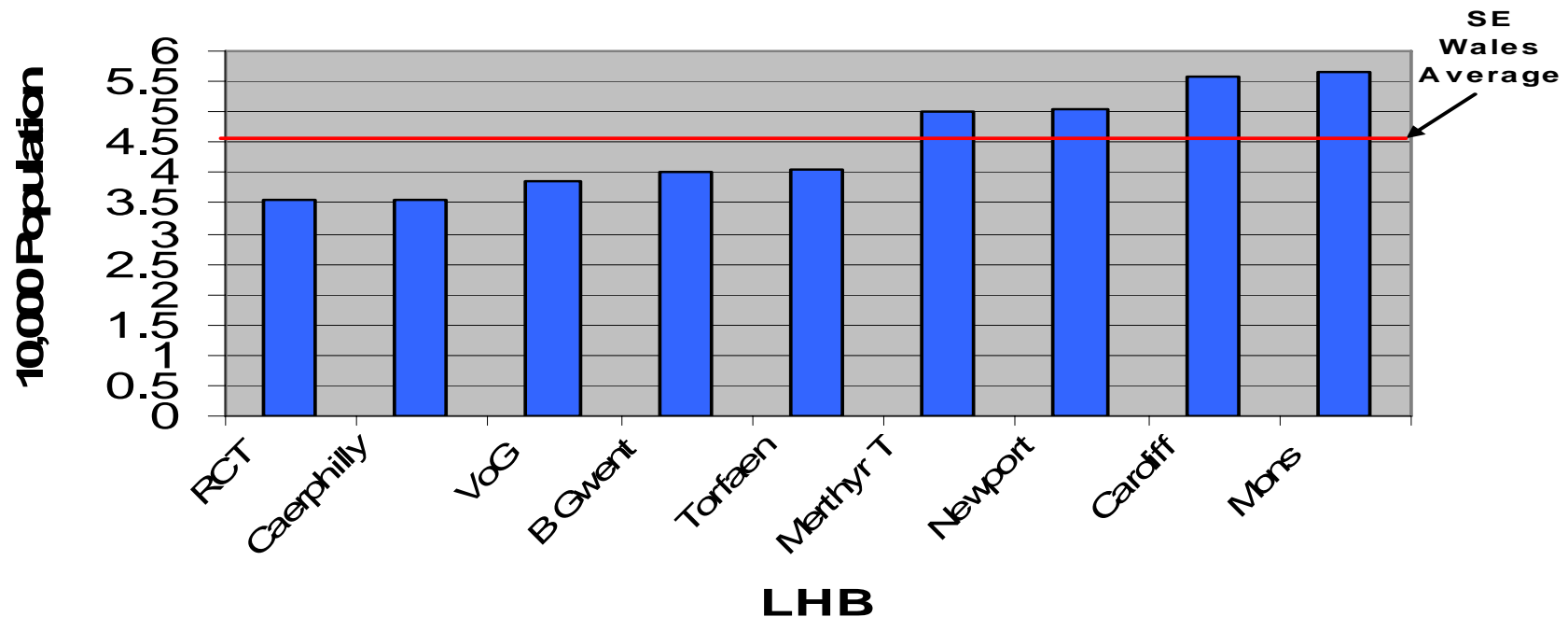
- Everyone can see an NHS dentist when they need emergency or urgent treatment
- Access difficulties have been addressed in particular parts of the country
- Registration was introduced in 1990 and only 50% of the adult population has ever been registered

Access issues: SE Wales

- Workforce
 - ◆ Commitment to NHS
 - ◆ Geographical distribution
 - ◆ Retirement

Workforce Issues

Dentists/10,000 Population by LHB



- 568 dentists (230 practice locations)
- 20% of these dentists are over 55 years old



National Public Health
Service for Wales
Gwasanaeth Iechyd Cyhoeddus
Cenedlaethol Cymru

Looking on the Bright Side

667997 patients registered with NHS in Dec 05

South East Wales PDS Schemes

73 practices involved

Total NHS commitment confirmed for

363600 patients including:

An additional 79073 NHS patients



The other side of the Coin

■ All Wales Survey of Dentists 2006

If you intend to continue to provide NHS dental services do you intend to provide?

- ◆ The same level of commitment 58.4%
- ◆ Increased level of commitment 6.5%
- ◆ Decreased level of commitment 33.6%
- ◆ Did not answer question 1.5%

■ Dentist withdrawals from NHS



National Public Health
Service for Wales

Gwasanaeth Iechyd Cyhoeddus
Cenedlaethol Cymru

Problems with the implementation of New Contractual Arrangements?

- Information
- Finance
- Communication





National Public Health
Service for Wales

Gwasanaeth Iechyd Cyhoeddus
Cenedlaethol Cymru

Possible Impacts of the New Dental Contract

■ Dentists

- ◆ % likely to reduce commitment to NHS
- ◆ Increased pressure on other providers

■ LHBs

- ◆ Commissioning difficulties
- ◆ Increased number of complaints and disputes
- ◆ Reduced access for local residents
- ◆ No national oral health strategy



National Public Health
Service for Wales

Gwasanaeth Iechyd Cyhoeddus
Cenedlaethol Cymru

Possible Impacts of the New Dental Contract

■ Patients

- ◆ Increased cost may become a barrier for some
- ◆ Altered attendance behaviour
- ◆ Increased complaints
- ◆ Reduced access

Issues for discussion- Your opinion

