

# YOUTH SERVICE METHODOLOGY

TANIS ANN CUNNICK  
HEAD OF YOUTH WORK  
STRATEGY BRANCH  
WELSH ASSEMBLY  
GOVERNMENT



Llywodraeth Cynulliad Cymru  
Welsh Assembly Government

**Wythnos**  
Gwaith Ieuencid

Youth Work  
**Week**

GwaithIeuencidCymru YouthWorkWales

# DEFINITION & PURPOSE

Youth Work provides personal and social education opportunities for young people between the ages of 11-25.

Youth Workers have a unique relationship with young people with a primary focus on identifying the individual issues that affect their personal and social development and assisting them to achieve their potential.



Llywodraeth Cynulliad Cymru  
Welsh Assembly Government

**Wythnos**  
Gwaith Ieuenctid

**Youth Work**  
**Week**

**GwaithIeuenctidCymru YouthWorkWales**

# STRATEGY & VISION

- Young People, Youth Work, Youth Service; National Youth Work Strategy for Wales
- Extending Entitlement
- Young Wales
- Curriculum Statement for Wales



Llywodraeth Cynulliad Cymru  
Welsh Assembly Government

**Wythnos**  
Gwaith Ieuenctid

Youth Work  
**Week**

GwaithIeuenctidCymru YouthWorkWales

# APPROACH

The EC (2001) Communication on Lifelong Learning: It defines the three types thus:

**Informal learning:** learning resulting from daily life activities related to work, family or leisure. It is not structured (in terms of learning objectives, learning time or learning support) and typically does not lead to certification. Informal learning may be intentional but in most cases it is non-intentional (or “incidental”/ random).

**Non-formal learning:** learning that is not provided by an education or training institution and typically does not lead to certification. It is, however, structured (in terms of learning objectives, learning time or learning support). Non-formal learning is intentional from the learner’s perspective.

**Formal learning:** learning typically provided by an education or training institution, structured (in terms of learning objectives, learning time or learning support) and leading to certification. Formal learning is intentional from the learner’s perspective.

(N.B. Young people only spend 9 minutes of every waking hour within a formal education setting.)



Llywodraeth Cynulliad Cymru  
Welsh Assembly Government

**Wythnos**  
Gwaith Ieuenctid

**Youth Work**  
**Week**

**GwaithIeuenctidCymru YouthWorkWales**

# ROLE



Llywodraeth Cynulliad Cymru  
Welsh Assembly Government

Wider services that include elements for young people (eg Health, Transport, Housing, Leisure)

Services specifically for young people (e.g. Schools, Careers, Youth Offending)

**The Youth Service**  
• Local Authority  
• Voluntary Organisations

**Youth Work**

**Wythnos**  
Gwaith Ieuenctid

**Youth Work**  
**Week**

**Gwaith Ieuenctid Cymru Youth Work Wales**

# INFORMATION SERVICES FOR YOUNG PEOPLE



Llywodraeth Cynulliad Cymru  
Welsh Assembly Government

The services available within this facility should include:

- Information Shop
- Counselling Rooms
- Digilab
- Multi Youth Agency Offices
- Peripatetic Specialist Services
- Resource Room
- Training Centre
- Childcare



**Wythnos**  
Gwaith Ieuencid

**Youth Work**  
**Week**

**GwaithIeuencidCymru YouthWorkWales**

# FIT FOR PURPOSE YOUTH ACTIVITY CENTRES

- Arts and Crafts
- Digi Labs
- Girls Work
- Issue Based Youth Work
- Health Education
- Indoor Games
- Performing Arts
- Sport
- Trips
- Community Events
- Youth Committee
- Breakfast Clubs
- Lunch Time Clubs
- Out of School Hours Clubs
- Youth Clubs



Llywodraeth Cynulliad Cymru  
Welsh Assembly Government

GwaithleuencidCymru YouthWorkWales

**Wythnos**  
Gwaith leuencid

**Youth Work**  
**Week**

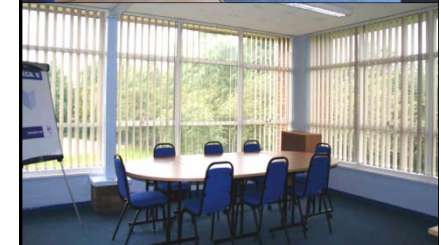
# COMMUNITY FOCUSED SCHOOLS

A Community Focused School Coordinator has a common brief in terms of facilitating activities for young people as the Youth Worker. It is essential that the link between these services are maintained in order to avoid duplication.

- Aid transition
- Community Projects
- Intergenerational Work Information Services for children, young people and adults.
- Peer Education



Llywodraeth Cynulliad Cymru  
Welsh Assembly Government



GwaithleuencidCymru YouthWorkWales



# SUMMER PROGRAMME

This provision enables young people to access informal and non-formal learning opportunities during school and college holiday periods.

Joint funded initiatives between Statutory, Voluntary Youth Services and Youth Offending Teams pool resources to provide activities that respond to the needs of young people.



Llywodraeth Cynulliad Cymru  
Welsh Assembly Government

**Wythnos**  
Gwaith Ieuenctid

**Youth Work**  
**Week**

**GwaithIeuenctidCymru YouthWorkWales**

# ACCREDITED YOUTH PROJECTS

20% of youth work should be accredited in order to recognise the value of the learning.

- Youth Leadership
- Babysitting Skills
- First Aid Certificate
- Health Education
- Life Saving Awards
- Sport Leadership

Youth Achievement Awards

Children's University

Open College Network

Gwaithleuencid Cymru Youth Work Wales



Llywodraeth Cynulliad Cymru  
Welsh Assembly Government

Wythnos  
Gwaith leuencid

Youth Work  
Week

# DUKE OF EDINBURGH AWARD SCHEME

## PROGRESSION

- Bronze
- Silver
- Gold
- Young Leadership

## LOCATION

- Schools
- Youth Activity Centres
- Open DofE Centres
- Voluntary Organisations
- Youth Offending Team
- Probation Services
- Pupil Referral Units



GwaithleuencidCymru YouthWorkWales



Llywodraeth Cynulliad Cymru  
Welsh Assembly Government

**Wythnos**  
Gwaith leuencid

**Youth Work**  
**Week**

# DETACHED & OUTREACH YOUTH WORK

- Street Corners
- Bus shelters
- Parks
- Playgrounds
- Wherever young people meet informally
- To engage with young people that do not participate in centre based activities.
- To contribute to the prevention of anti social behaviour.



Llywodraeth Cynulliad Cymru  
Welsh Assembly Government

**Wythnos**  
Gwaith Ieuenctid

**Youth Work**  
**Week**

**GwaithIeuenctidCymru YouthWorkWales**

# MOBILE YOUTH WORK

- 25 ft Vehicle
- Disabled Access
- Training Area
- Galley Kitchen
- Information Point
- Counselling Room
- Awning with external refreshment facilities

To develop youth work where centre based provision cannot exist.



Llywodraeth Cynulliad Cymru  
Welsh Assembly Government

**Wythnos**  
Gwaith leuencid

**Youth Work**  
**Week**

**GwaithleuencidCymru YouthWorkWales**

# APPRENTICE YOUTH WORKERS

- Target age group 18-25 years
- Supervision from qualified and experienced youth workers
- Work placement for four days per week
- Attend University for one day per week
- 3 Years Employment
- Secure a professional qualification -  
Degree in Youth and Community Work
- Duke of Edinburgh Gold Award



Llywodraeth Cynulliad Cymru  
Welsh Assembly Government

**Wythnos**  
Gwaith Ieuenctid

**Youth Work**  
**Week**

**GwaithIeuenctidCymru YouthWorkWales**

# RESIDENTIAL EDUCATION

- To facilitate an intensive learning process
- To provide accreditation opportunities
- To demonstrate success
- To enhance current relationships
- To provide new learning opportunities
- To secure qualifications
- To progress to further, higher learning or employment



Llywodraeth Cynulliad Cymru  
Welsh Assembly Government

**Wythnos**  
Gwaith Ieuenctid

**Youth Work**  
**Week**

**GwaithIeuenctidCymru YouthWorkWales**

# INTERNATIONAL YOUTH WORK

- To facilitate global citizenship
- To enhance and progress current initiatives
- To provide reward for effort and commitment
- To provide new experiences



## Nationally

- Ireland
- Scotland
- England

## European

- France
- Spain
- Poland
- Sweden

## Worldwide

- Pennsylvania
- Patagonia



Llywodraeth Cynulliad Cymru  
Welsh Assembly Government

Gwaithleuencid Cymru YouthWorkWales

**Wythnos**  
Gwaith leuencid

**Youth Work**  
**Week**



# YOUTH FORA COMMITTEES

To provide young people with a voice.

To empower young people through the decision making process.

To assist young people to develop facilities and activities for their peers

- Schools
- Youth Centres
- Youth Projects

It will be essential that the activities delivered respond to the Local Participation Strategy



Llywodraeth Cynulliad Cymru  
Welsh Assembly Government

**Wythnos**  
Gwaith Ieuenctid

Youth Work  
**Week**

Gwaith Ieuenctid Cymru Youth Work Wales

# EXTENDED CURRICULUM

This methodology is based on the concept of Youth Workers delivering formal, non formal and informal education to young people who are not attending school or are at risk of being excluded.

This programme should be delivered and funded through a multi agency approach which includes schools.

## Location

Community Schools  
Information Shop  
Mobile Youth Provision

## Resources

Qualified and experienced Youth Workers



Llywodraeth Cynulliad Cymru  
Welsh Assembly Government

GwaithleuencidCymru YouthWorkWales

**Wythnos**  
Gwaith leuencid

Youth Work  
**Week**

# VOLUNTEERING

This programme provides young people with an opportunity to be based within current Youth Activity Centres, Youth Projects or Community Focused Schools.



Outcomes include:

- Valuable experience
- Qualifications
- Key Skills
- Demonstrating successful outcomes
- Access to resources
- Effective support
- Bridge the gap between unemployment and securing part time and full time jobs



Llywodraeth Cynulliad Cymru  
Welsh Assembly Government

GwaithleuencidCymru YouthWorkWales

**Wythnos**  
Gwaith leuencid

**Youth Work**  
**Week**

# 14-19 PATHWAYS IN YOUTH WORK

This programme provides young people with an opportunity to undertake a course of study that could lead to further and higher qualification in Youth & Community Work. This will include a focus on leadership skills and citizenship.

This should include a commitment to the delivery of the Duke of Edinburgh Award Scheme.

- Theory - delivered by Youth Workers and Teachers during school hours.
- Practice (Work based learning)- supported by Youth Workers during out of school hours.
- Young people will be encouraged to develop a peer education project within a statutory and voluntary youth service setting.



Llywodraeth Cynulliad Cymru  
Welsh Assembly Government

**Wythnos**  
Gwaith Ieuenctid

**Youth Work**  
**Week**

**GwaithIeuenctidCymru YouthWorkWales**

# YOUTH ENTERPRISE

This programme provides young people with opportunities to gain entrepreneurship skills which has the potential to enable them to establish their own business in the long term. A link with the Princes Trust will be essential to facilitate these opportunities.

- Social Enterprise
- Individual Business Concerns
- Partnership Enterprise



Llywodraeth Cynulliad Cymru  
Welsh Assembly Government

GwaithleuencidCymru YouthWorkWales

**Wythnos**  
Gwaith leuencid

**Youth Work**  
**Week**

# BENEFITS OF YOUTH WORK



Llywodraeth Cynulliad Cymru  
Welsh Assembly Government

## Active Participation

- Enjoyment and achievement
- Making a positive contribution to their Youth Club
- Improvement health, fitness and well being
- Acquiring practical skills
- Improved knowledge
- Community activities
- Managing risk

## Wider Skills Development

- Learning to learn
- Team building
- Communication
- Problem solving
- Decision making
- Influencing services and policies

## Enhanced Emotional Competence

- Confidence and motivation
- Self awareness and self worth
- Positive relationships
- Empathy and understanding

GwaithleuencidCymru YouthWorkWales

**Wythnos**  
Gwaith leuencid

Youth Work  
**Week**

# NATIONAL STANDARDS FOR THE YOUTH SERVICE IN WALES

1. Planning
2. Reach
3. Contacts
4. Outcomes
5. Resources
6. Workforce
7. Rights and responsibilities
8. Client Satisfaction
9. Welsh Language
10. Participation
11. Management Information Systems



Llywodraeth Cynulliad Cymru  
Welsh Assembly Government

**Wythnos**  
Gwaith Ieuenctid

**Youth Work**  
**Week**

**GwaithIeuenctidCymru YouthWorkWales**

# PROVIDERS

## Local Authority

- 22 Local authorities

## Voluntary Sector

- Council Wales Voluntary Youth Services
- National organisations  
e.g. Scouts & Guides
- Local organisations



Llywodraeth Cynulliad Cymru  
Welsh Assembly Government

**Wythnos**  
Gwaith Ieuencid

Youth Work  
**Week**

GwaithIeuencidCymru YouthWorkWales



# WHAT DO WE NEED TO DO?

1. What are you able to do?
2. What do I need to do?
3. What will we do together?
4. What are the anticipated outcomes?
5. What is the anticipated impact?



Llywodraeth Cynulliad Cymru  
Welsh Assembly Government

**Wythnos**  
Gwaith Ieuenctid

**Youth Work**  
**Week**

**GwaithIeuenctidCymru YouthWorkWales**