

Audit Committee

AC(3)-08-08 p(7) Responses to two questions raised at previous Audit Committee meetings

Date: 17 July 2008

Time: 9.30am - 12.40pm

Venue: Committee Room 3

1. At the evidence session on 19 June on the Senedd, members asked for

(a) a note on the whole life costings of the Senedd including estimates based on figures for ideal running levels and current actual figures.

(b) a note on the level of electricity consumption in the Senedd, indicating both the amount and cost of the electricity used each year since the Senedd opened.

2. The response to this is at Annex A

3. At the evidence session on 3 July the Auditor General for Wales agreed to provide the Committee with a note explaining why the extended Welsh Assembly Government's "c-difficile" surveillance scheme applied only to patients over the age of 2 and under the age of 65.

4. The response to this is at Annex B

Committee Service

Annex A

Briefing Note To Audit Committee

In December 2007, the Senedd environmental systems designers, BDSP produced an annual energy prediction benchmark to demonstrate:

How the Senedd should be capable of being operated in energy terms;

How the Senedd could be operated to further improve its environmental performance based on a pragmatic series of improvements.

The benchmark and baseline has provided the Assembly Commission with invaluable information and advice. This can be taken forward as part of its energy management reduction project, in conjunction with the Carbon Trust and an energy management specialist.

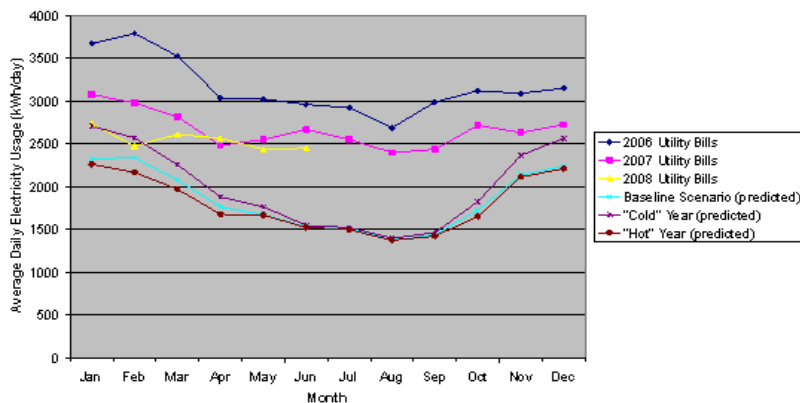
The graph attached at Annex 1 shows the baseline electricity prediction for the Senedd and the actual electricity usage to date. The graph illustrates that electricity usage is reducing over time in line with the implementation of improvements recommended by BDSP to review the building lighting strategy and settings.

As part of our energy management project we regularly monitor electricity usage and will strive to further reduce consumption in line with the benchmark.

Members of the Committee also asked to be provided with the amount and costs of electricity used each year since the Senedd opened. The costs are reducing. A table illustrating this information is attached at Annex 2.

Annex 1

Senedd Monthly Variation of Electricity Consumption



Annex 2

Senedd Monthly Electricity Consumption

-	2006	kWh	2007	kWh	2008	kWh
Jan	£ 9,983.00	113,975	£ 9,766.00	95,265	£ 6,006.00	82,177
Feb	£ 10,127.00	106,287	£ 8,671.00	83,498	£ 5,460.00	74,310
March	£ 9,559.00	109,422	£ 9,047.00	87,449	£ 5,726.00	78,441
April	£ 8,008.00	91,280	£ 5,476.00	74,498	£ 6,896.00	77,052
May	£ 8,246.00	93,881	£ 5,731.00	79,201	£ 6,577.00	73,239
June	£ 8,330.00	94,858	£ 5,820.00	80,141	£ 6,609.00	73,565
July	£ 8,680.00	84,813	£ 5,810.00	79,984	-	-
Aug	£ 8,588.00	83,845	£ 5,491.00	75,223	-	-
Sept	£ 9,182.00	89,772	£ 5,653.00	77,753	-	-
Oct	£ 9,859.00	96,819	£ 5,905.00	81,613	-	-
Nov	£ 9,511.00	92,831	£ 5,796.00	79,055	-	-
Dec	£ 9,991.00	97,764	£ 5,971.00	81,830	-	-
Totals	£ 110,064.00	1,155,547	£ 79,137.00	975,510	£ 37,274.00	458,784

Annex B



WALES AUDIT OFFICE
SWYDDFA ARCHWILIO CYMRU

Wales Audit Office / Swyddfa Archwilio Cymru

Date: 9th July 2008
Our ref: JC/0686/fgb
Your ref:
Pages: 1 of 2

24 Cathedral Road / Heol y Gadeirlan
Cardiff / Caerdydd
CF11 9LJ
Tel / Ffôn: 029 20 320510
Fax / Ffacs: 029 20 320555
www.wao.gov.uk

Email / Ebot: jeremy.colman@wao.gov.uk
PA / CP Fiona Bashford, fiona.bashford@wao.gov.uk

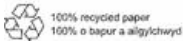
Mr David Melding AM
Chair of the Audit Committee
National Assembly for Wales
Cardiff Bay
Cardiff CF99 1NA

Dear Chair

**WELSH ASSEMBLY GOVERNMENT RESPONSE TO THE AUDIT COMMITTEE
REPORT: *MINIMISING HEALTHCARE ASSOCIATED INFECTIONS IN NHS TRUSTS
IN WALES***

During the Committee's discussion on 3rd July about advice on the Assembly Government's response to your report on healthcare associated infections, I promised to provide further explanation of the proposed changes to *Clostridium difficile* surveillance in Wales. Eleanor Burnham had asked me why the Assembly Government's proposed extension of surveillance was limited to the 2 – 65 age range (the over-65s having already been subject to screening for three years).

The exclusion of the under twos is essentially because of clinical issues which would render any data on colonisation with *Clostridium difficile* in the under twos unreliable. It is important to note that the prevalence I describe relates to colonisation rather than infection.



Jeremy Colman Auditor General for Wales / Archwilydd Cyffredinol Cymru

Colonisation with *Clostridium difficile* is common in the intestine of up to two thirds of babies and infants, but does not cause disease because its toxins (poisons) do not damage their immature intestinal cells. Clinical cases of *Clostridium difficile* related disease are very rare in the under twos. Consequently, *Clostridium difficile* is more prevalent in the under twos than in the over twos. Random sampling of under twos would therefore reveal a higher colonisation rate than in other age groups which is why under twos were excluded from the new surveillance protocol to avoid misleading results. For similar reasons, England has excluded under twos from its *Clostridium difficile* surveillance.

I understand that the first set of the new data arising from the extended *Clostridium difficile* surveillance scheme should be available in September and will cover the first six months of 2008.

I hope that this provides useful further information.

Yours sincerely

Joana Basford

MP

JEREMY COLMAN
AUDITOR GENERAL FOR WALES